



STREET LIGHT

Outdoor Light | Street Light



ZERON
NEW LIGHT NEW LIFE

Street Light Zeron

ZERN-PTH-ZRSM

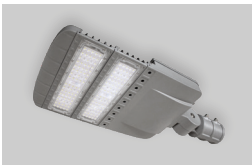


3.000K 4.000K 5.000K 6.000K

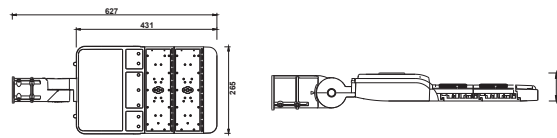
■ Specification

Daya (W)	Input Voltage	Frequency Amp	LED Efikasi	Total Lumen	CRI	Temperatur Warna	Proteksi	Beam Angle	Berat	Material
70W	AC100-277V	50/60Hz	160Lm/W	11.200Lm	>70Ra	3000K/5000K	IP66	120°	3.9kg	Die Casting Aluminium + Polycarbonate
90W	AC100-277V	50/60Hz	160Lm/W	14.400Lm	>70Ra	3000K/5000K	IP66	120°	3.9kg	
120W	AC100-277V	50/60Hz	160Lm/W	19.200Lm	>70Ra	3000K/5000K	IP66	120°	3.9kg	
150W	AC100-277V	50/60Hz	160Lm/W	24.000Lm	>70Ra	3000K/5000K	IP66	120°	4.9kg	

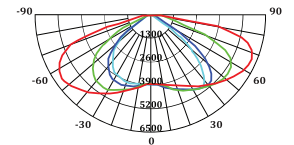
Model : ZERN-PTH-ZRSM-70W
ZERN-PTH-ZRSM-90W
ZERN-PTH-ZRSM-120W



Dimension (mm)



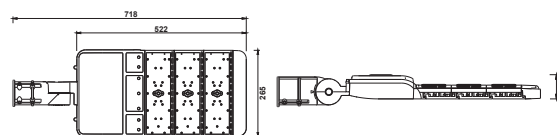
Light Distribution Curve



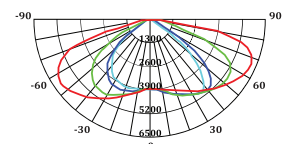
Model : ZERN-PTH-ZRSM-150



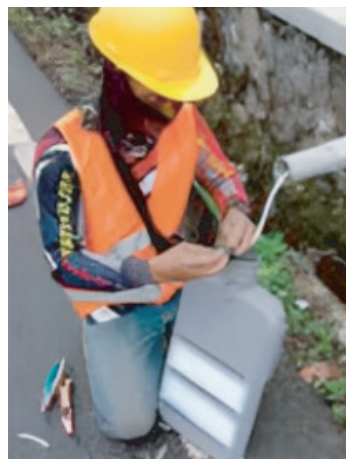
Dimension (mm)



Light Distribution Curve



Application



- * Easy maintenance
- Modular LED for easy replacement
- Opening and closing possible of LED module part and power supply part
- Customizable beam angle
- Temperature max 50°

